



- 1)
- a) 9 children voted for chicken pizza.
 - b) 7 children voted for pineapple and vegetarian pizza in total.
 - c) 4 fewer children voted for pepperoni pizza than chicken pizza.
- 2)
- a) 6 more children visited Spain than Greece.
 - b) 32 children visited France and Portugal in total.
 - c) Children's answers will vary.



- 1)
- a) Jia is incorrect because the number of children who chose water is the same in both year 5 and year 6. Both bar charts show 8 children but on different scales.
 - b) Hari is incorrect because the number of children who voted for orange juice in year 5 is 5 and the number of children who voted for orange juice in year 6 is 12. Double 5 is 10, not 12.
- 2) Emily is incorrect because number of children who chose curry and pasta bake in total is 22 and the number of children who chose roast dinner is 20.

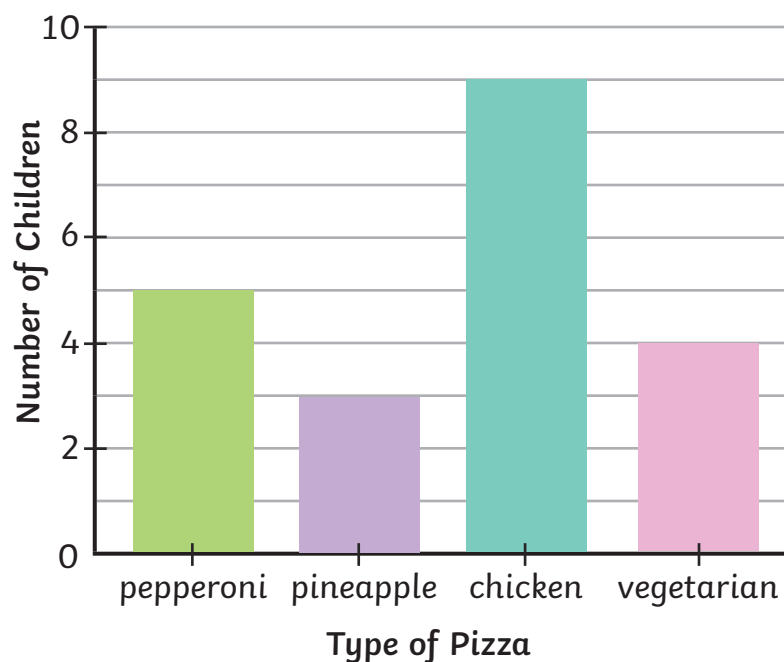


- 1)
- 16 children in KS1 chose carrots.
 - 36 children in KS1 chose broccoli.
 - 11 children in KS1 chose peas.
 - 12 children in KS1 chose cauliflower.



Interpret Bar Charts

1) This bar chart shows year 3's favourite pizza.

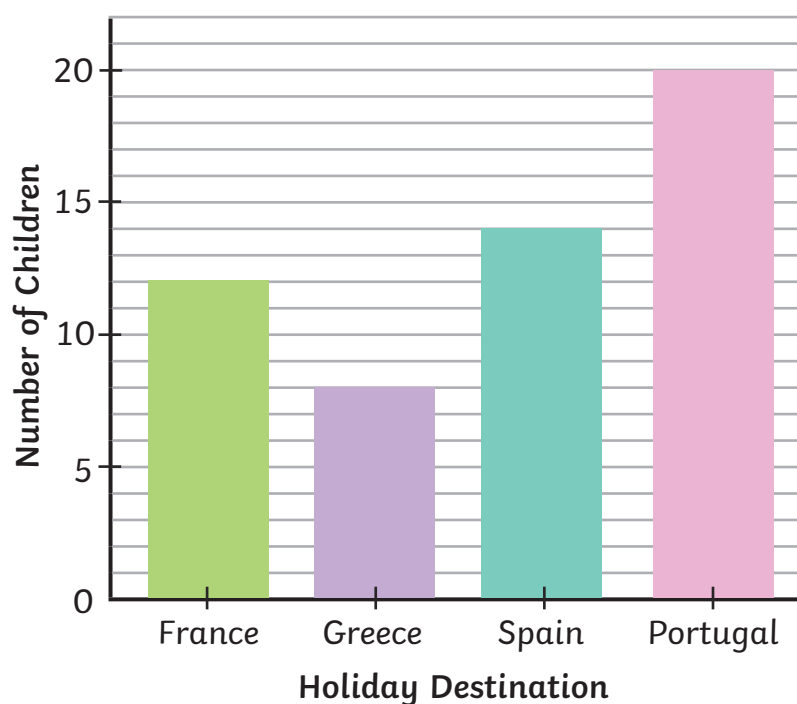


a) How many children voted for chicken?

b) How many children voted for pineapple and vegetarian in total?

c) How many fewer children voted for pepperoni than chicken?

2) This bar chart shows the places that year 3 and year 4 went on holiday.



a) How many more children visited Spain than Greece?

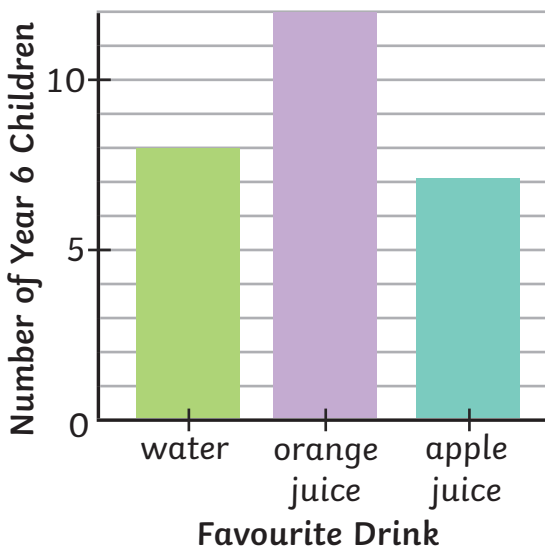
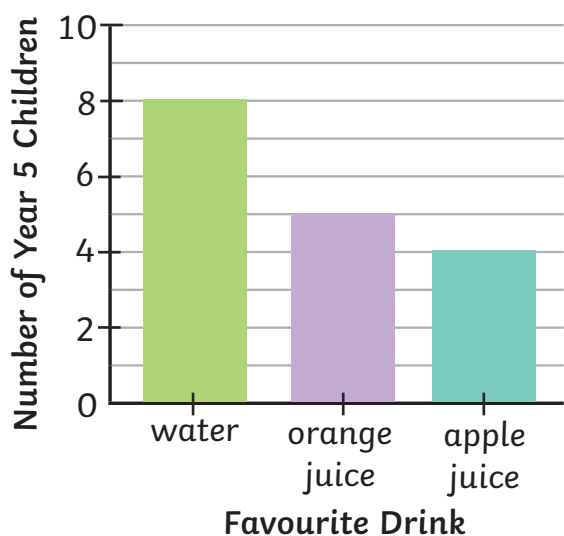
b) How many children visited France and Portugal in total?

c) Write your own question and answer about the data.



Interpret Bar Charts

1) The bar charts show the favourite drinks of children in year 5 and year 6.



Do you agree with Jia and Hari? Explain your reasoning.



Jia

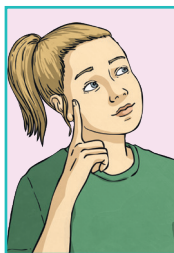
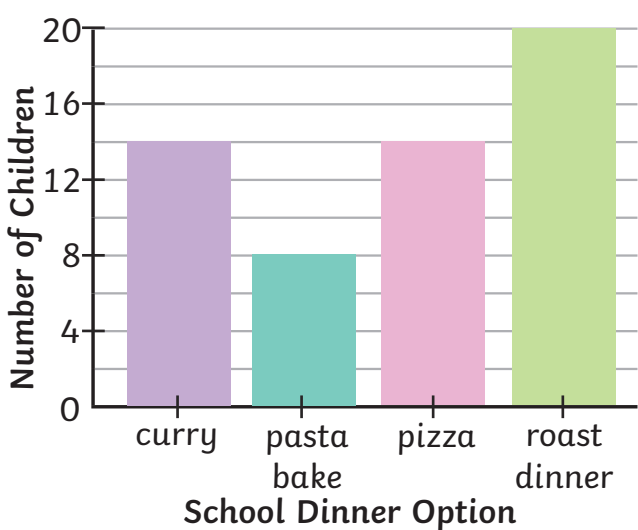
More children in year 5 chose water than in year 6 because the bar is taller in the year 5 bar chart.



Hari

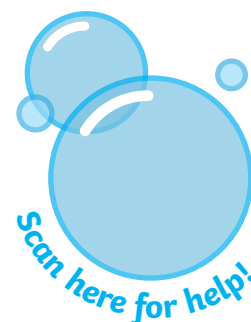
The number of children that voted for orange juice in year 6 is double the number of children that voted for orange juice in year 5.

2) This bar chart shows children's school dinner choices. Is Emily correct? Why?



Emily

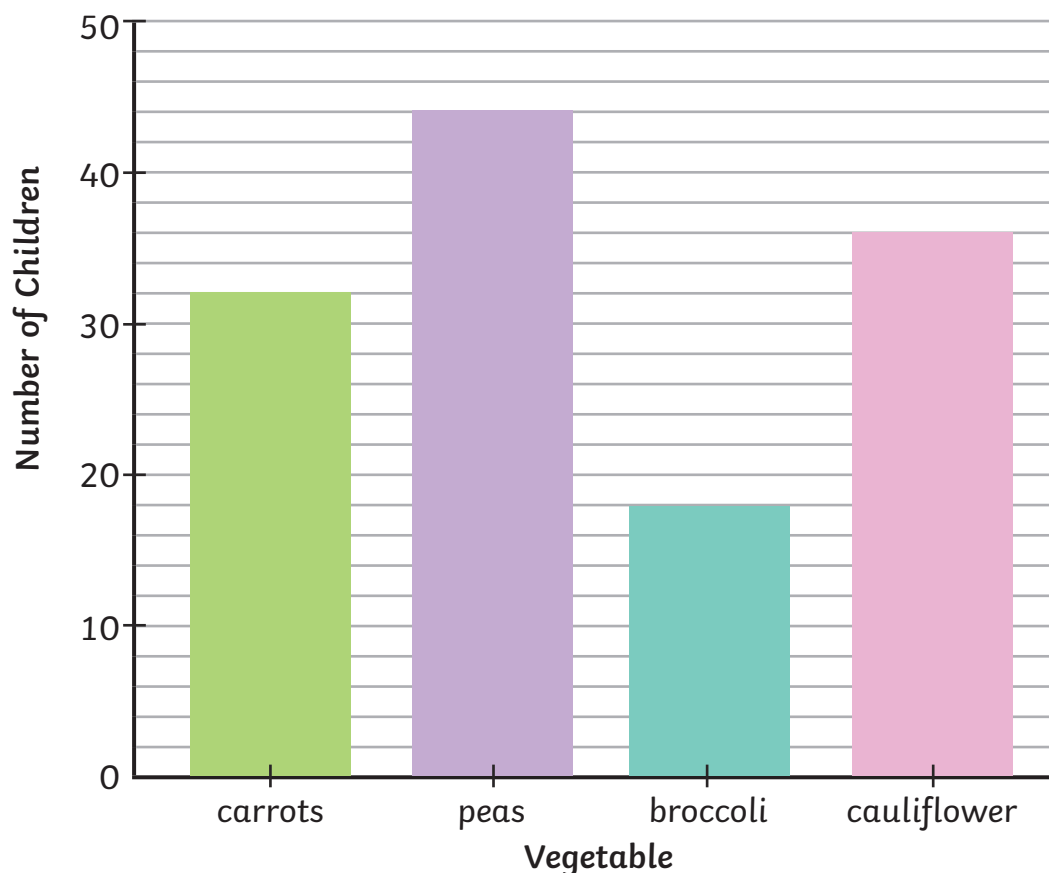
The number of children who have chosen curry and pasta bake in total is less than the number of children who have chosen roast dinner.





Interpret Bar Charts

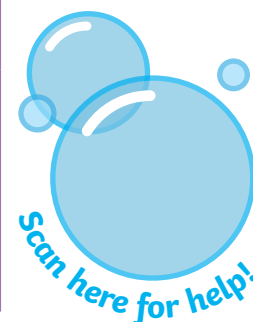
1) This bar chart shows the favourite vegetables of the children in KS2. Use the clues to work out the favourite vegetables of the children in KS1. Record your answers in the table.



- The number of children who chose carrots in KS1 is one-half of the number of children in KS2 who chose carrots.
- Twice as many children in KS1 chose broccoli than chose it in KS2.
- The number of children who chose peas is one-quarter of the number of children in KS2 who chose peas.
- Three times the number of children chose cauliflower in KS2 than the number of children who chose it in KS1.



	Carrots	Peas	Broccoli	Cauliflower
Number of KS1 Children				



Diving into Mastery



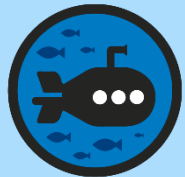
Interpret Bar Charts

Diving into Mastery Guidance for Educators

Each activity sheet is split into three sections, diving, deeper and deepest, which are represented by the following icons:



Diving



Deeper



Deepest

These carefully designed activities take your children through a learning journey, initially ensuring they are fluent with the key concept being taught; then applying this to a range of reasoning and problem-solving activities.

These sheets might not necessarily be used in a linear way. Some children might begin at the 'Deeper' section and in fact, others may 'dive straight in' to the 'Deepest' section if they have already mastered the skill and are applying this to show their depth of understanding.

National Curriculum Aim

- Interpret and present data using bar charts, pictograms and tables

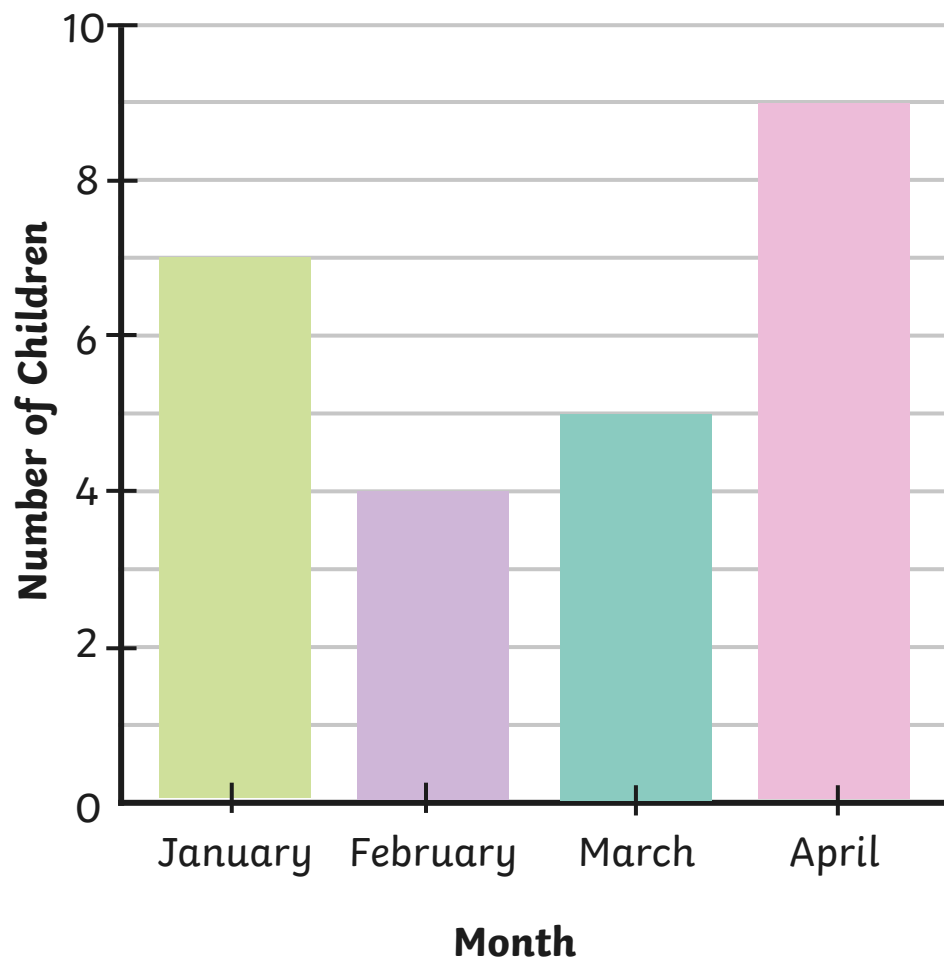


Interpret Bar Charts

Diving



This bar chart shows the birthdays of some of the children in year 3.



How many children have birthdays in March?

5

How many children have birthdays in January and February in total?

11

How many fewer children have birthdays in March than April?

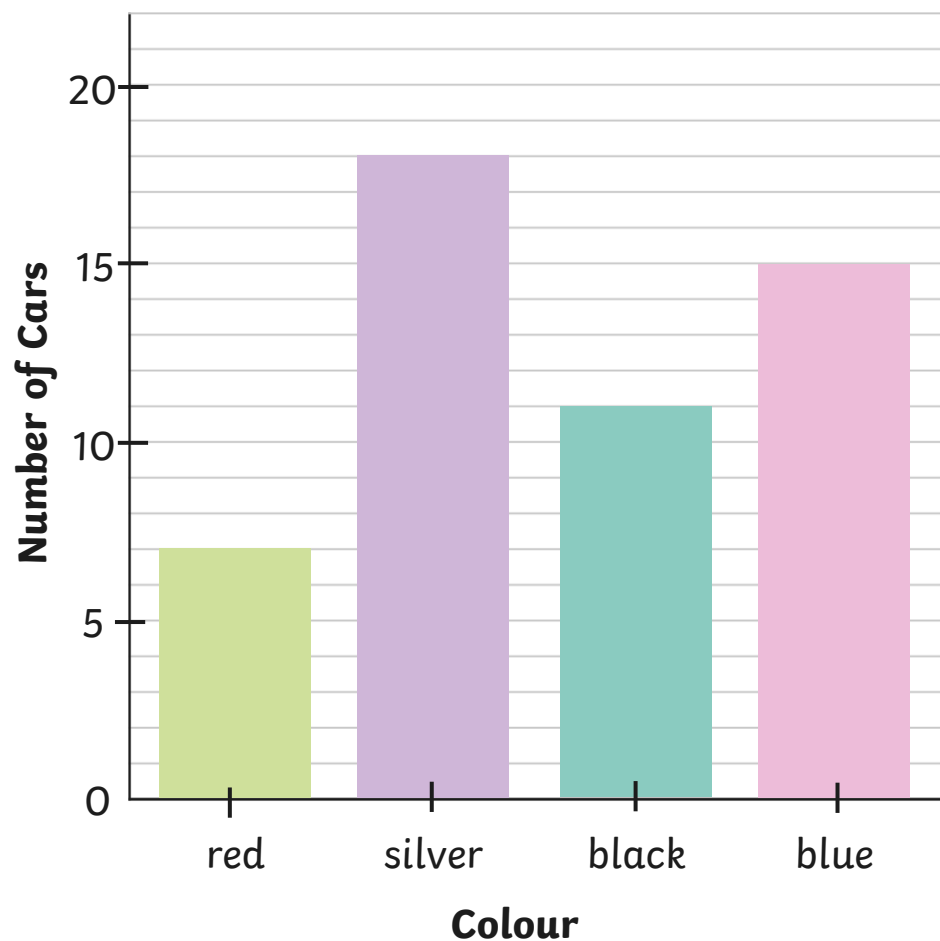
4

Interpret Bar Charts

Diving



This bar chart shows how many different colours of cars the children in year 3 saw on their way to school.



How many more silver cars were seen than red cars?

11

How many black and blue cars were seen in total?

26

How many cars were seen in total?

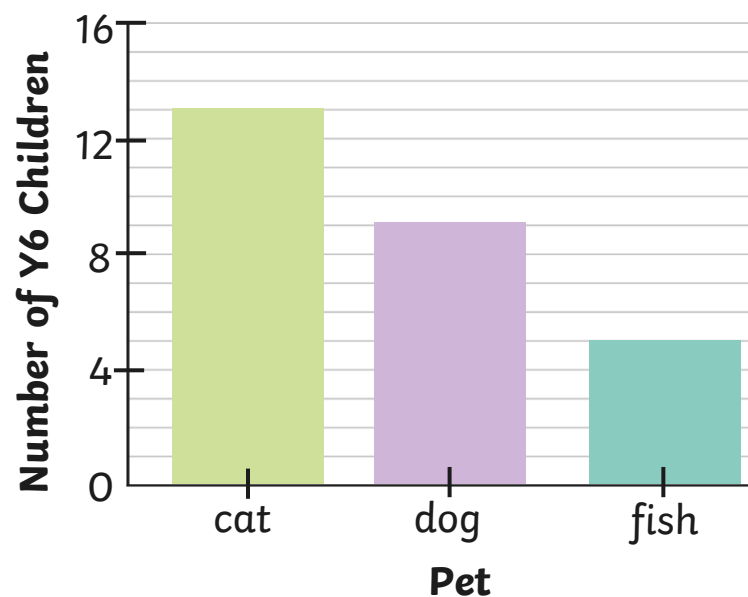
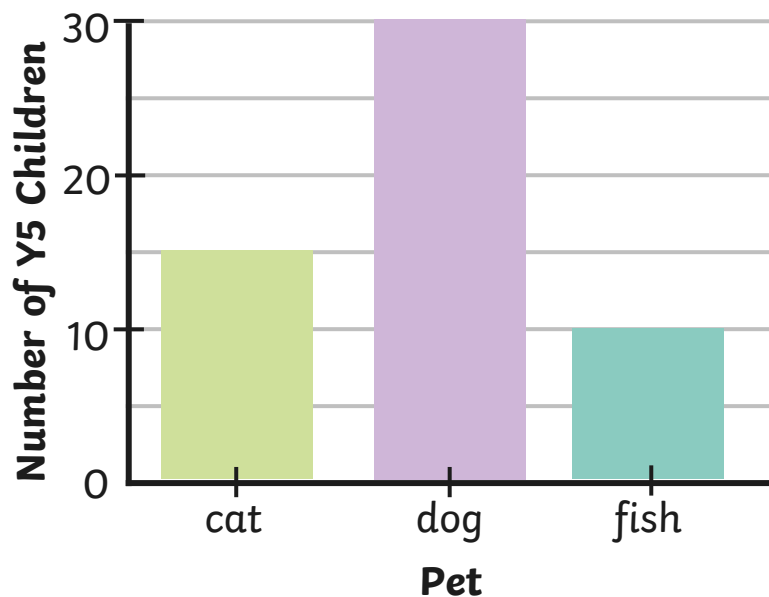
51

Interpret Bar Charts

Deeper



These bar charts show the favourite pets of children in year 5 and year 6.



Do you agree with Jia? Explain your reasoning.



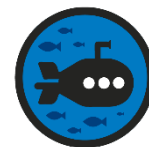
Jia

More children in year 6 chose cat than in year 5 because the bar is taller in the year 6 bar chart.

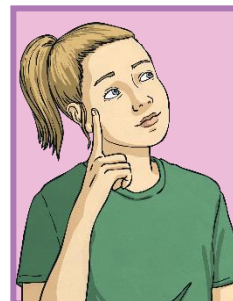
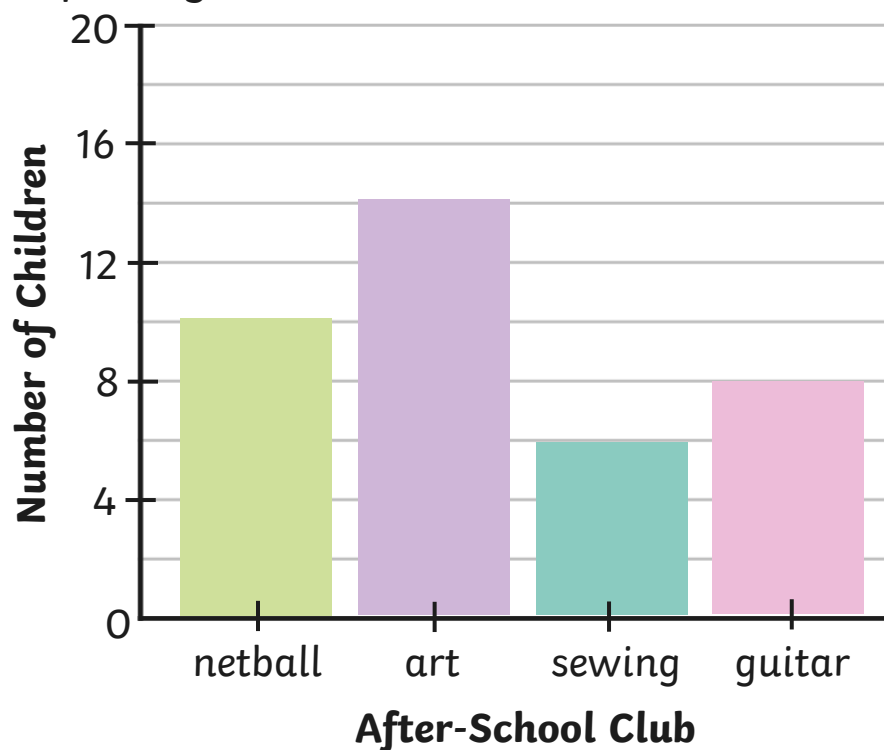
Jia is incorrect because a different scale has been used on the bar charts. 15 year 5 children chose cat and only 13 year 6 children chose cat.

Interpret Bar Charts

Deeper



This bar chart shows after-school club choices. Is Emily correct? Explain your answer.



Emily

The number of children who have chosen to attend art and guitar club in total is more than the number of children who chose to attend netball and sewing club in total.

Emily is correct because 22 children chose to attend art and guitar club in total compared to the 16 children who chose to attend netball and sewing club in total.

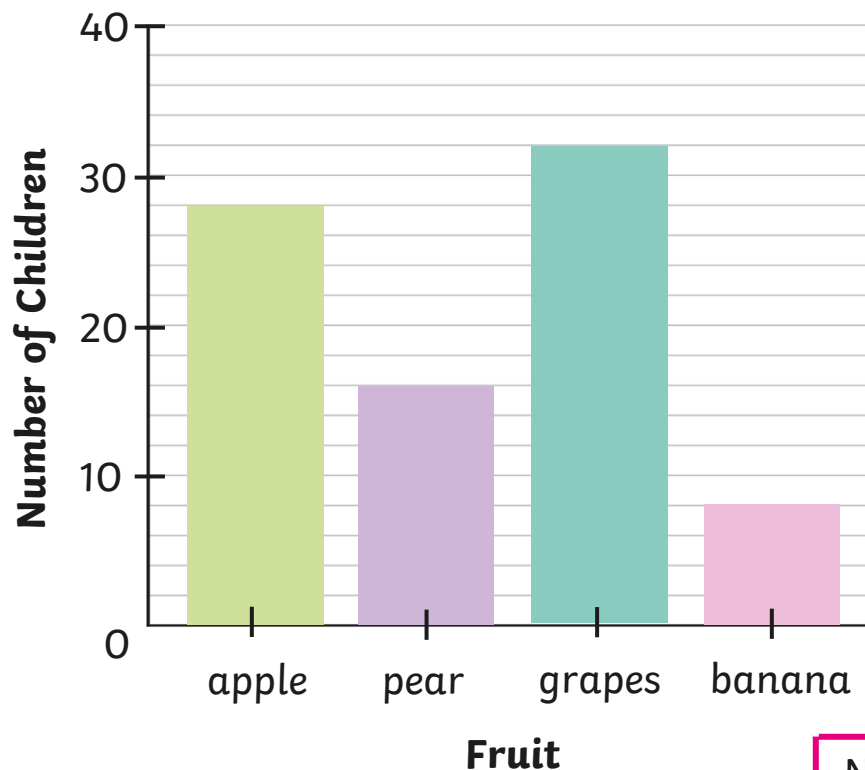
Interpret Bar Charts

Deepest



This bar chart shows the favourite fruits of the children in KS2.

Use the clues to work out the favourite fruits of the children in KS1.

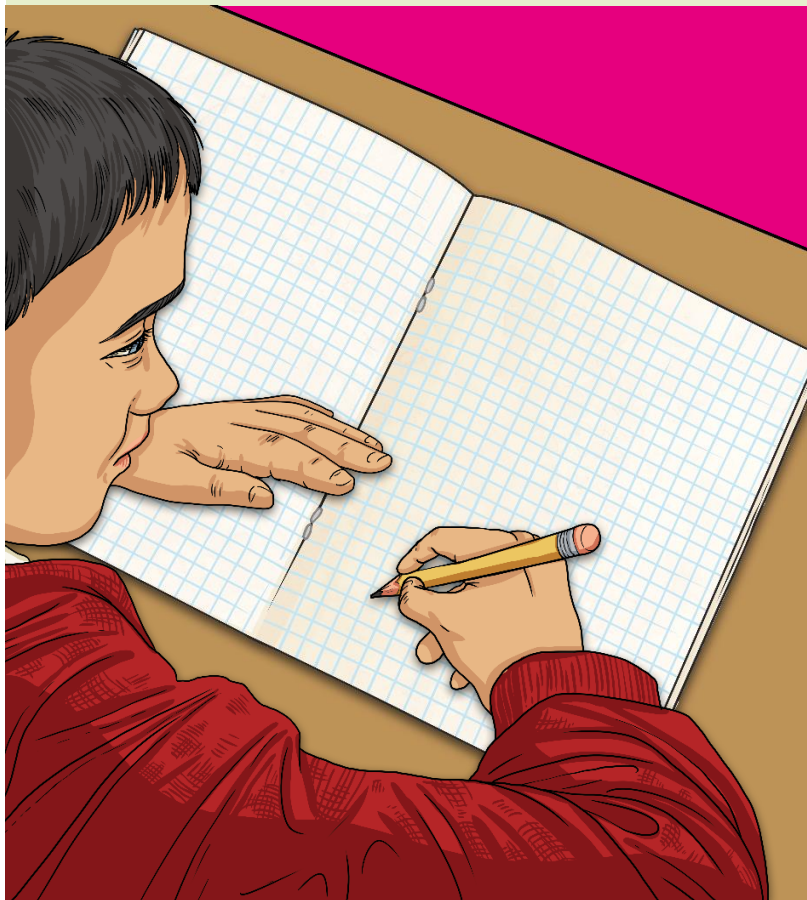


- The number of children who chose apple in KS1 is one-half of the number of children in KS2 who chose apple.
- Twice as many children in KS1 chose pear than in KS2.
- The number of children who chose grapes in KS1 is one-quarter of the number of children who chose grapes in KS2.
- Three times the number of children chose banana in KS1 than the number of children who chose it in KS2.

	Apple	Pear	Grapes	Banana
Number of KS1 Children	14	32	8	24

Interpret Bar Charts

Dive in by completing your own activity!



Interpret

1) This bar chart shows year 5 children's favourite pizza. The y-axis is labeled 'Number of Children' and ranges from 0 to 10. The x-axis is labeled 'Type of Pizza' and includes pepperoni, pineapple, chicken, and vegetarian. The bars show approximately 5 for pepperoni, 3 for pineapple, 9 for chicken, and 4 for vegetarian.

2) This bar chart shows the places that year 3 and year 4 went on holiday. The y-axis is labeled 'Number of Children' and ranges from 0 to 20. The x-axis is labeled 'Holiday Destination' and includes France, Greece, Spain, and Portugal. The bars show approximately 12 for France, 8 for Greece, 14 for Spain, and 20 for Portugal.

Interpret Bar Charts

1) This bar chart shows year 3's favourite pizza.

a) How many children voted for chicken?

b) How many children voted for pineapple and vegetarian in total?

c) How many fewer children voted for pepperoni than chicken?

2) This bar chart shows the places that year 3 and year 4 went on holiday.

a) How many more children visited Spain than Greece?

b) How many children visited France and Portugal in total?

c) Write your own question and answer about the data.

visit [twinkl.com](https://www.twinkl.com) Scan here for help!

